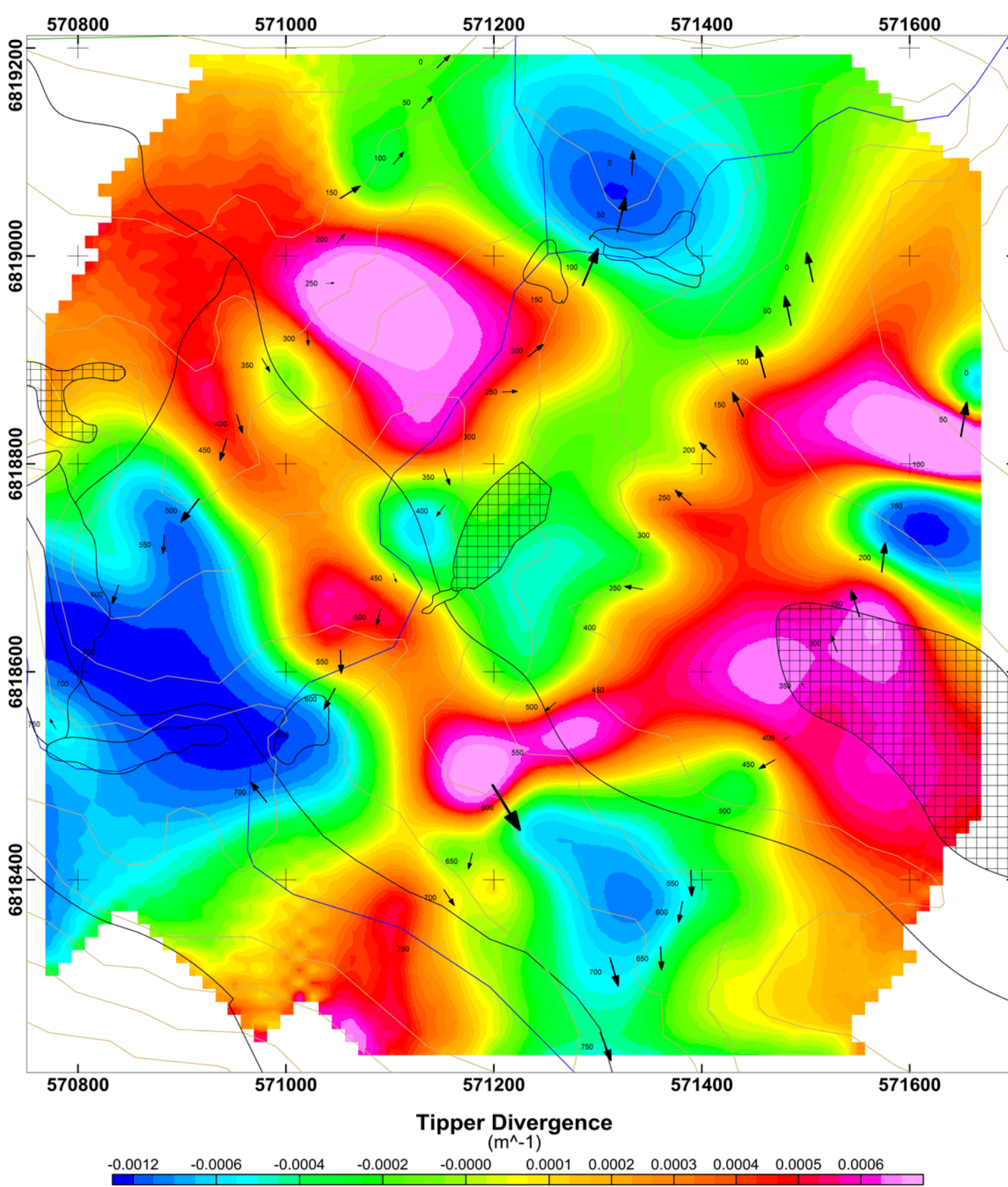
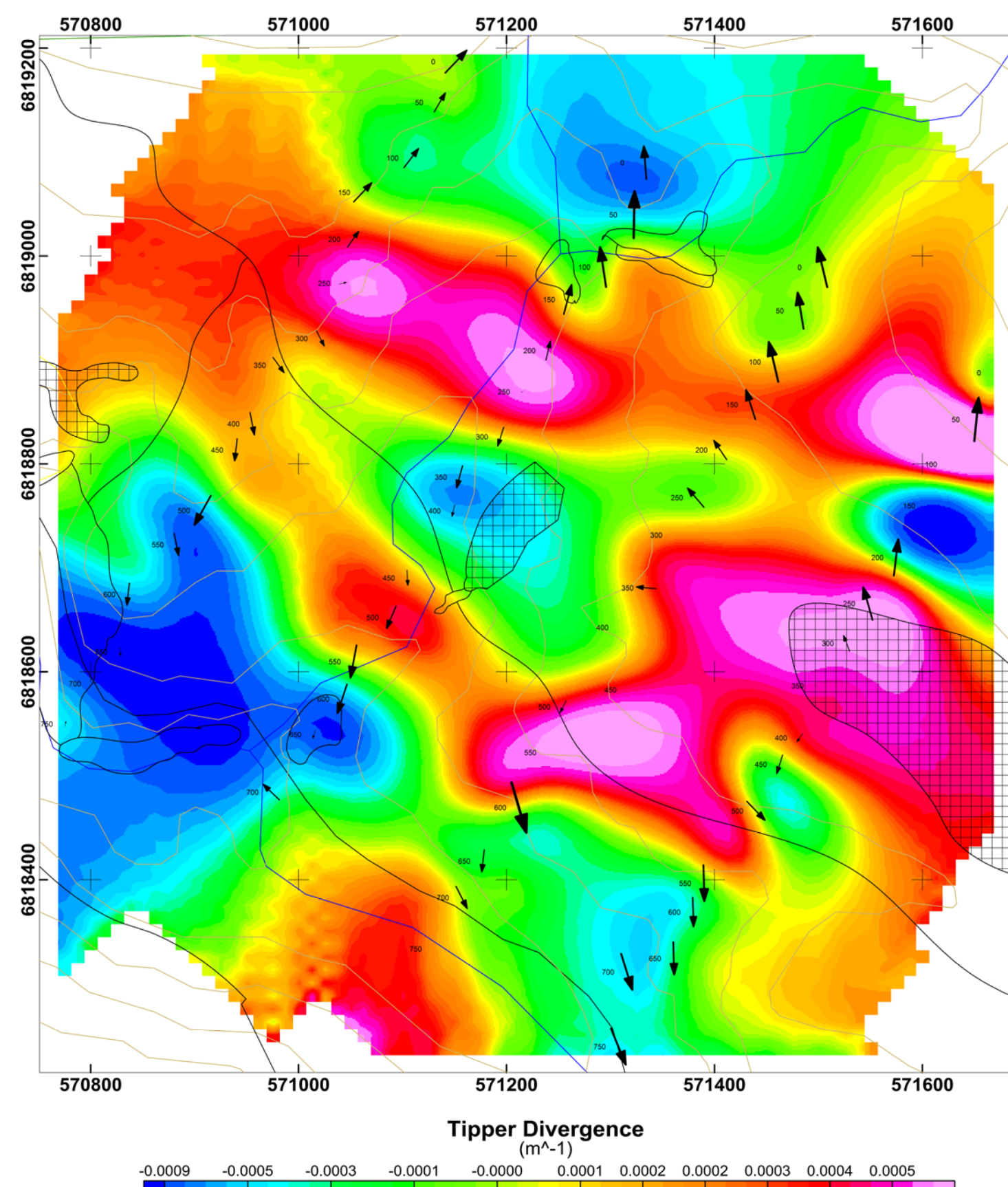


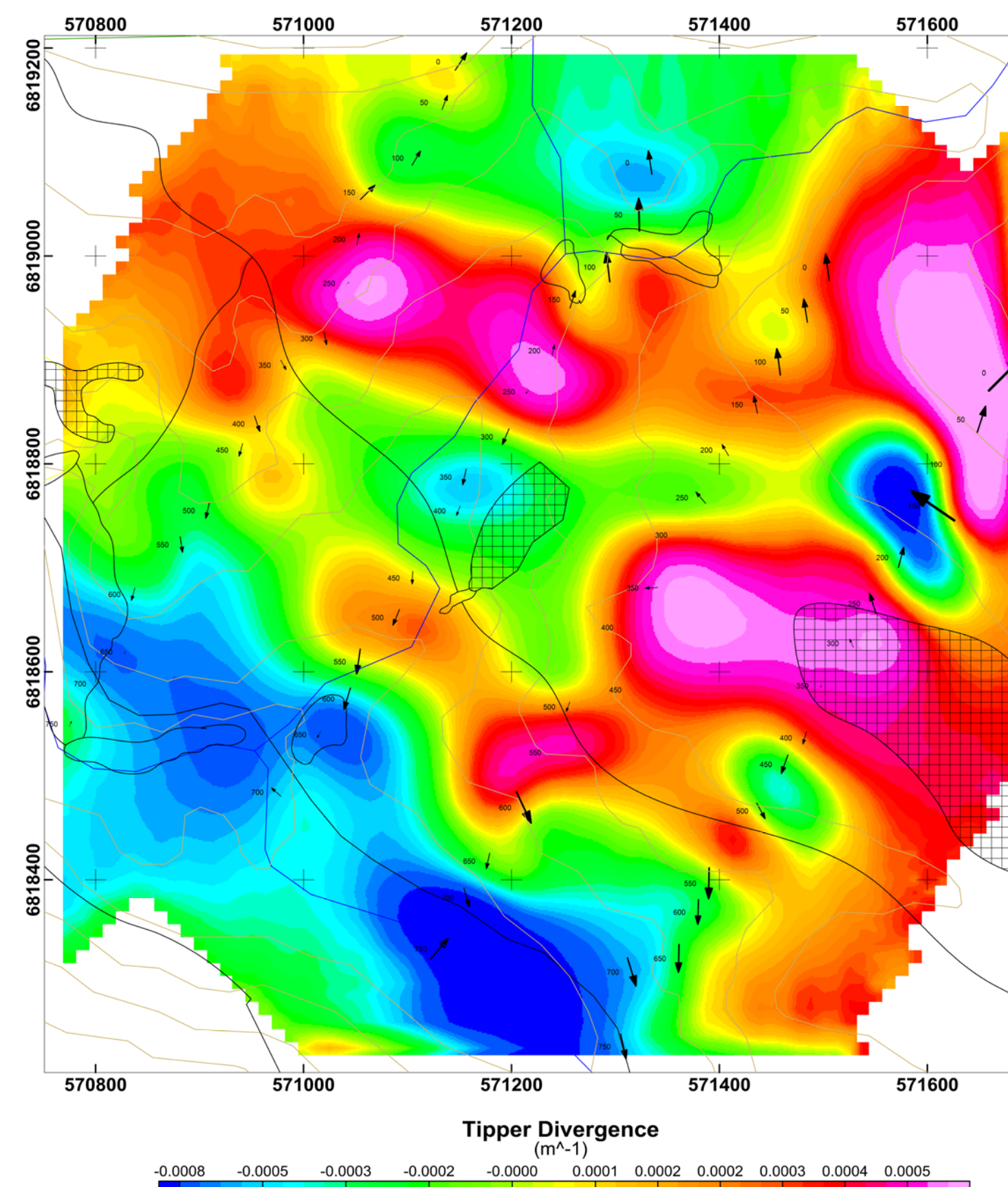
720 Hz



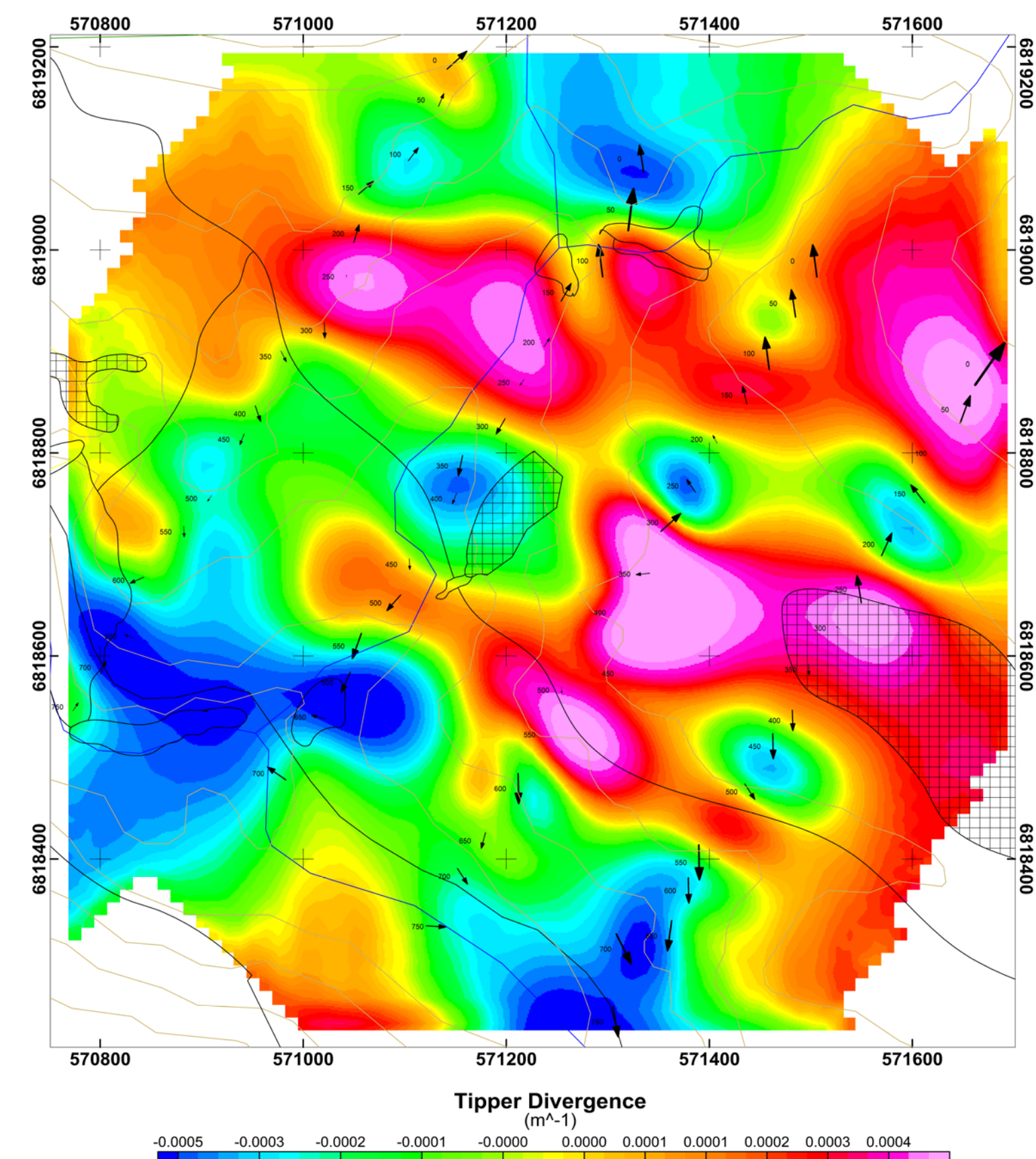
360 Hz



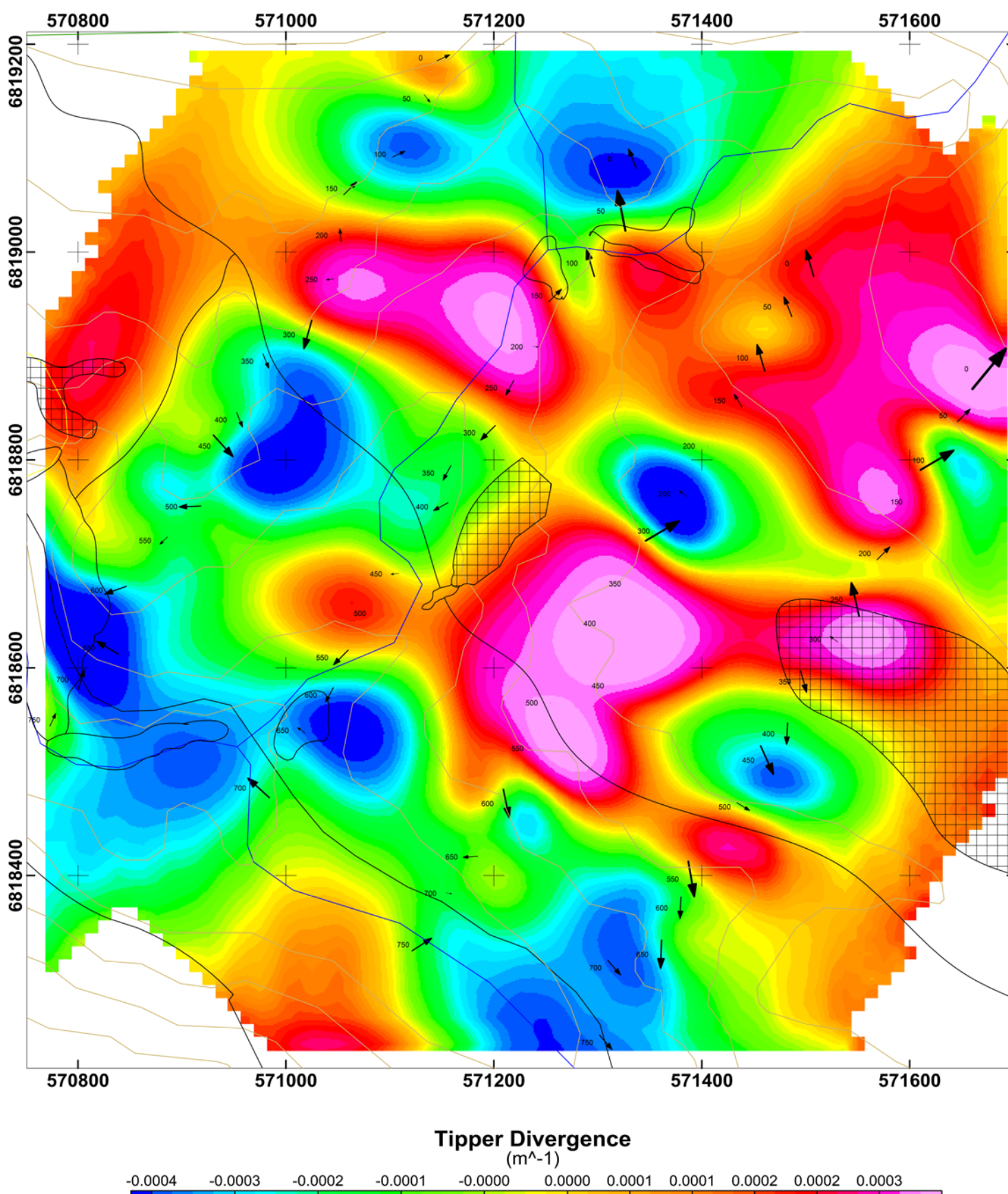
180 Hz



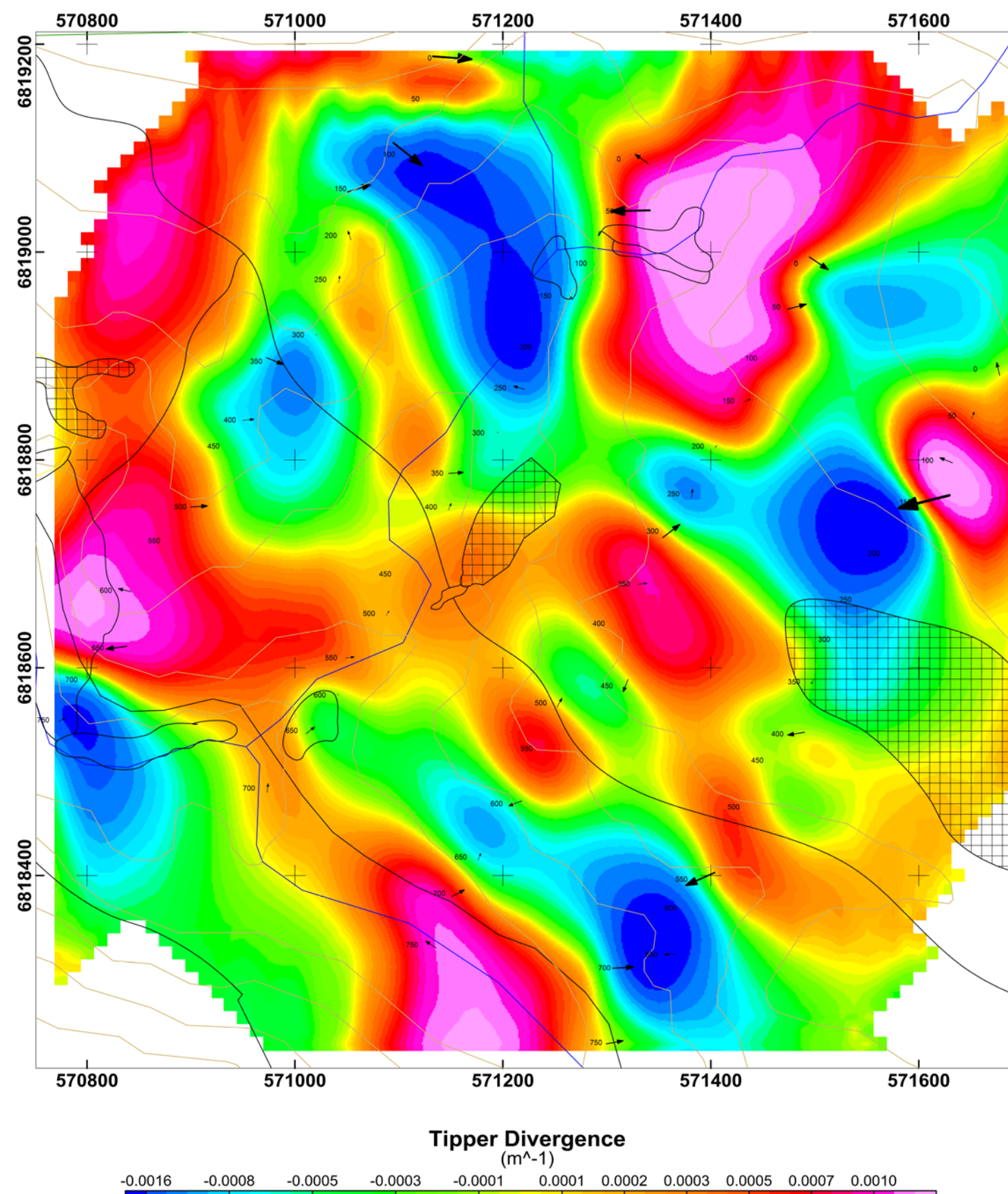
90 Hz



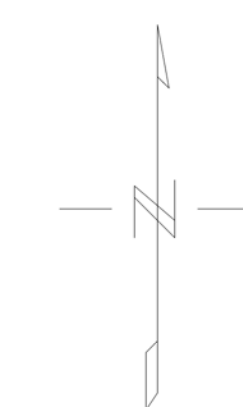
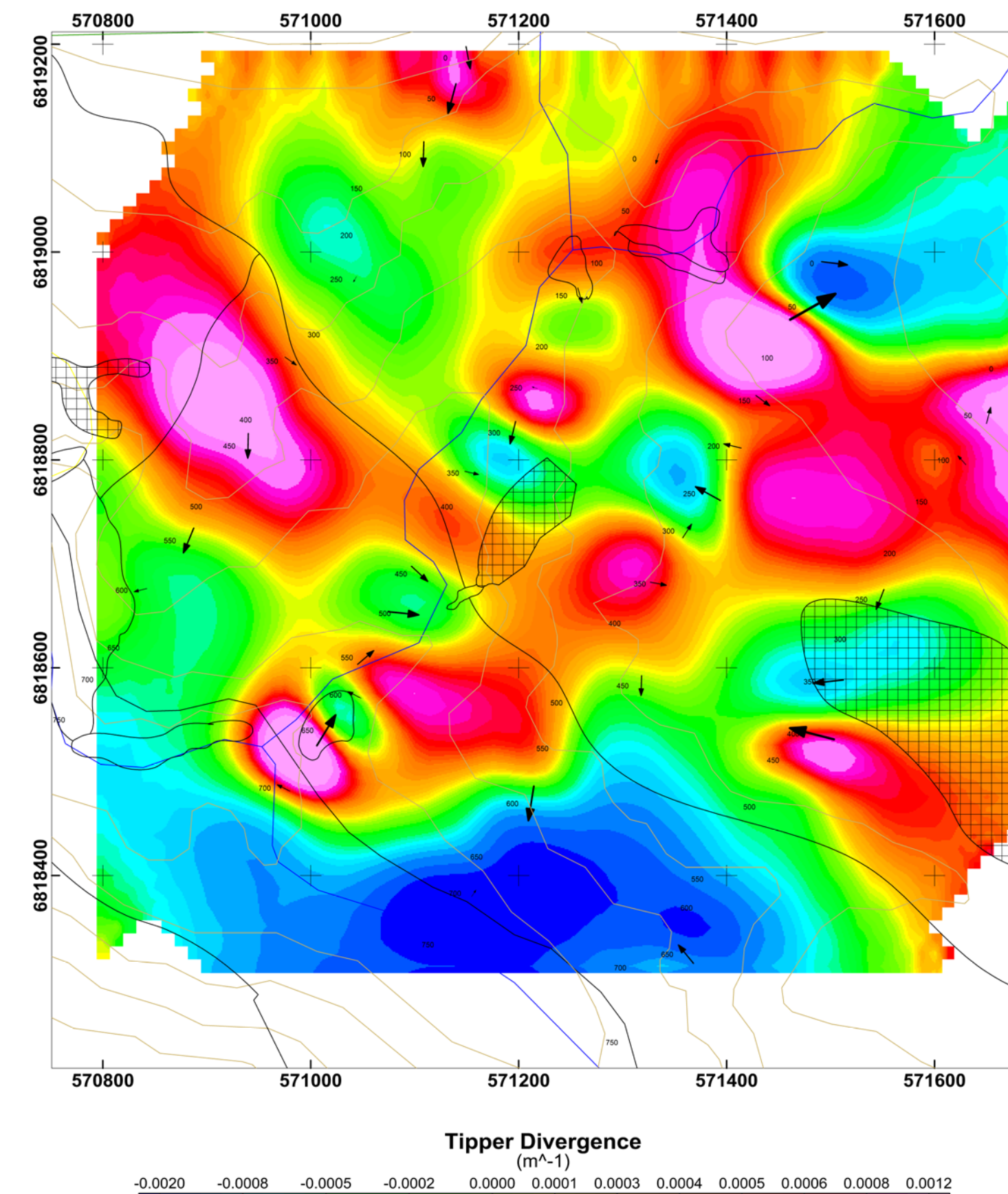
45 Hz



22 Hz



11 Hz

**LEGEND**

EXTREMELY LOW FREQUENCY SURVEY

STATION 200 TIPPER VECTOR

DATA FILE : WELLGREEN\_ELF\_PJ\_OC.gdb

OPERATORS : PJ &amp; CP

TOTAL STATIONS SURVEYED : 63

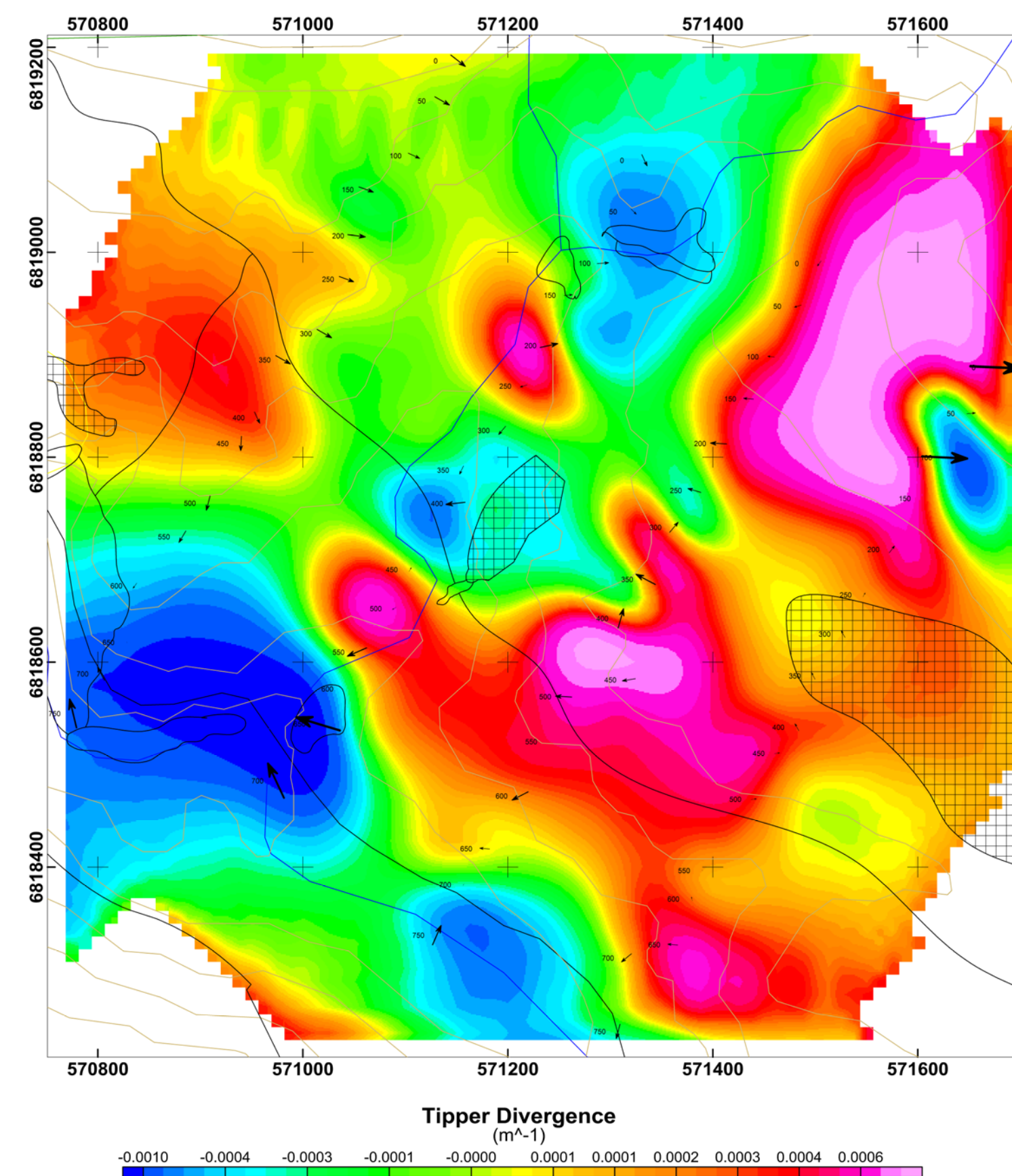
Scale 1:5000  
metres  
NAD83 / UTM zone 7NRevised Jan 19, 2014 by D. James.  
Replaced old geology with new geology

ultramafic sill

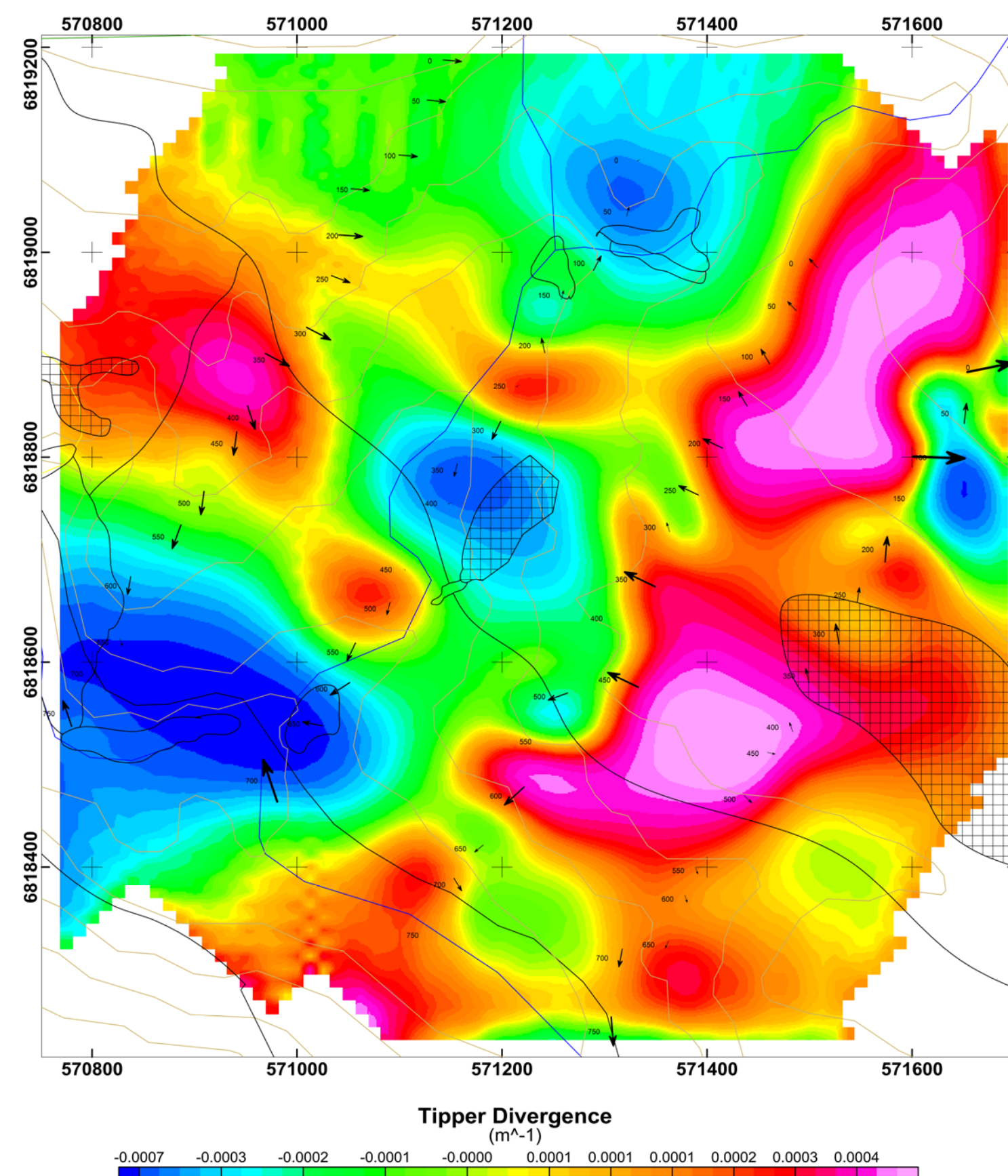
<b>MIDNIGHT MINING SERVICES</b>
<b>DONJEK-ARCH PROJECT - TECK GRID</b>
<b>ELF COMPILATION</b>
<b>INPHASE TIPPER VECTORS &amp; DIVERGENCE PLOTS</b>
WHITEHORSE MINING DISTRICT, YUKON, CANADA NTS: 115 G 05 DATE SURVEYED: AUGUST 2013 DATE / DRAWN BY: AUG 28, 2013 / PJ
<b>AURORA GEOSCIENCES LTD</b>



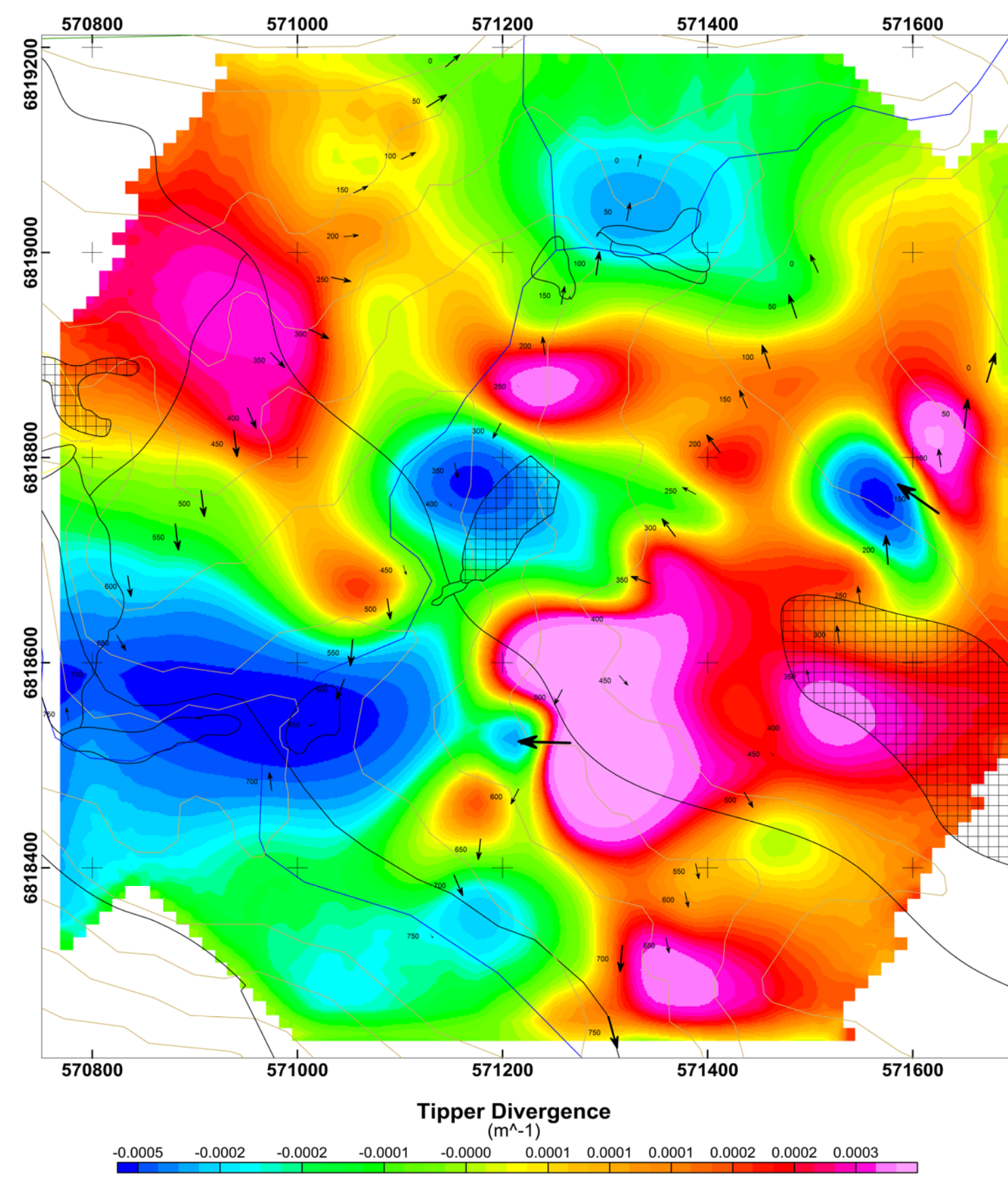
720 Hz



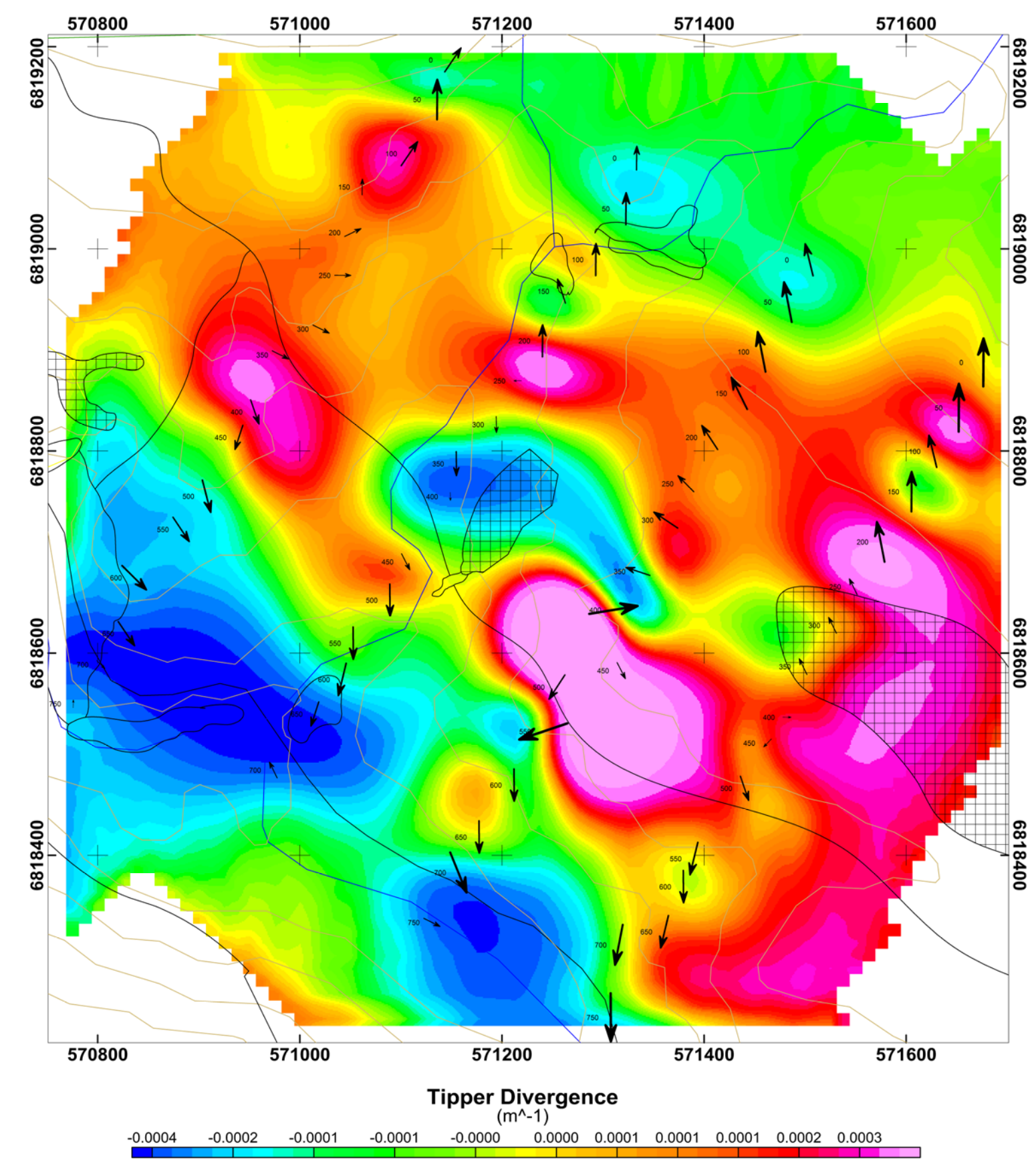
360 Hz



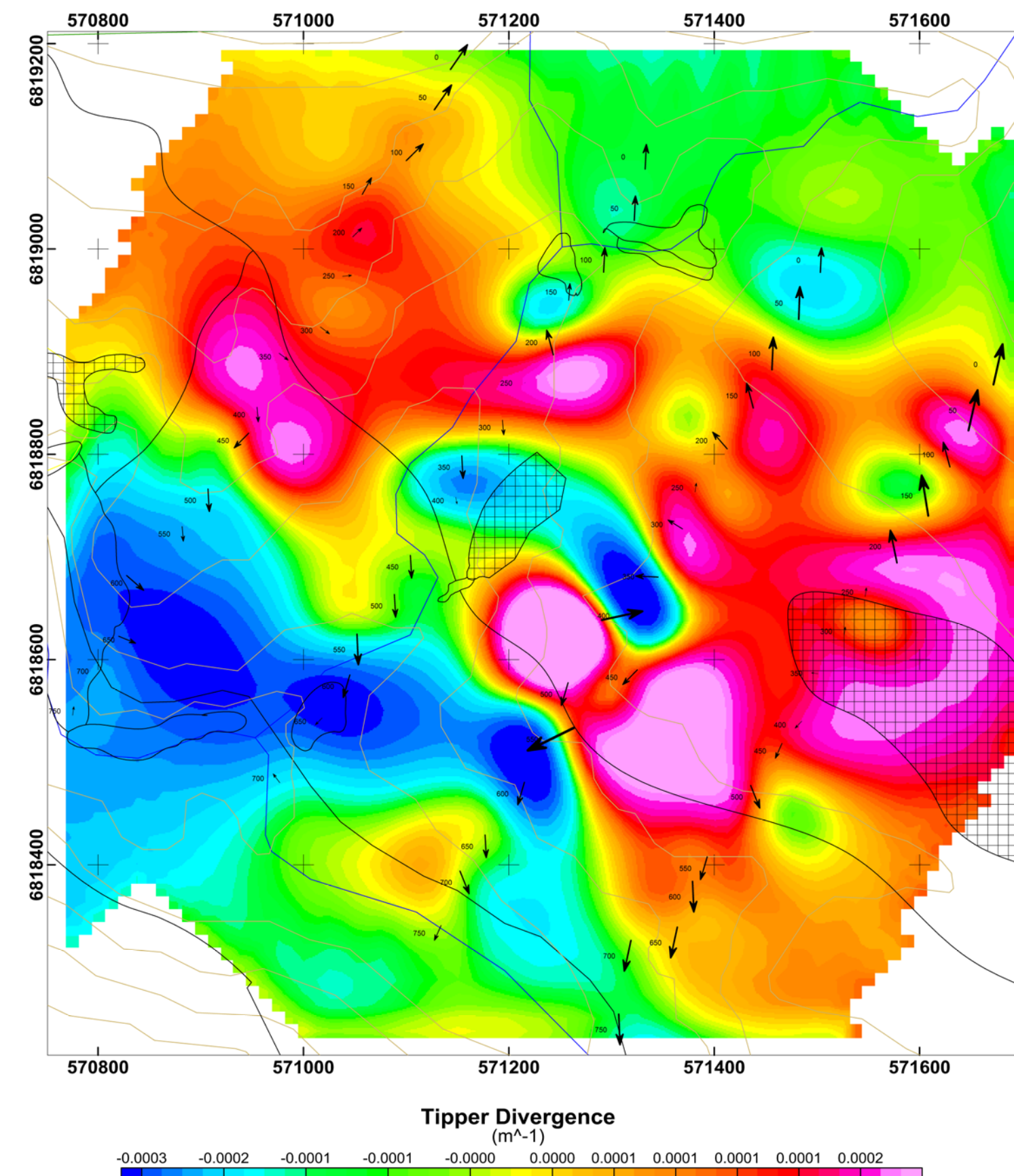
180 Hz



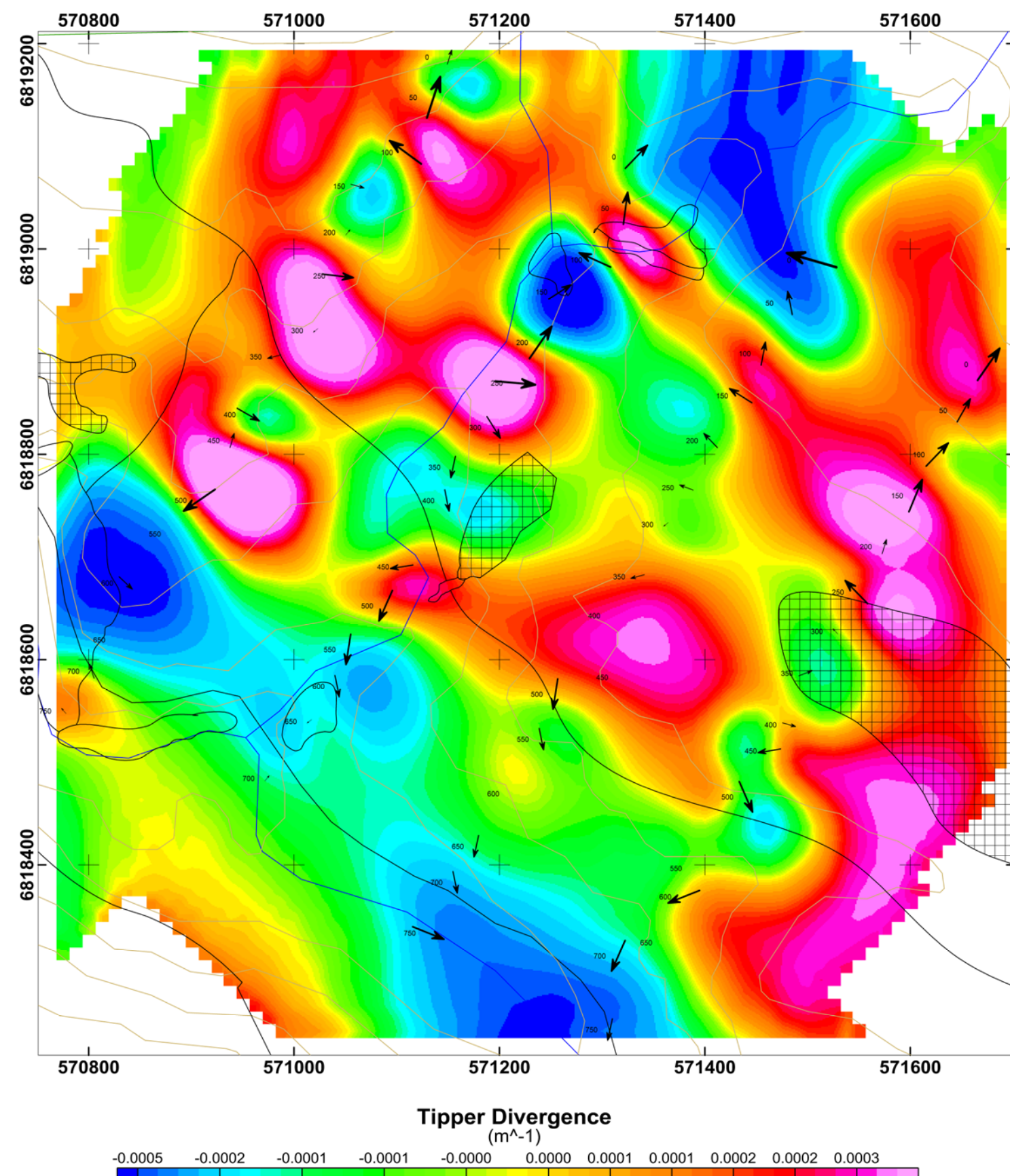
90 Hz



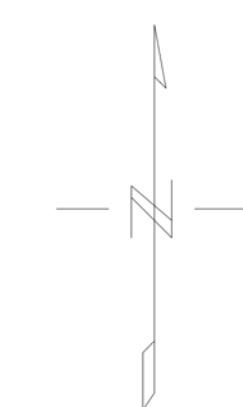
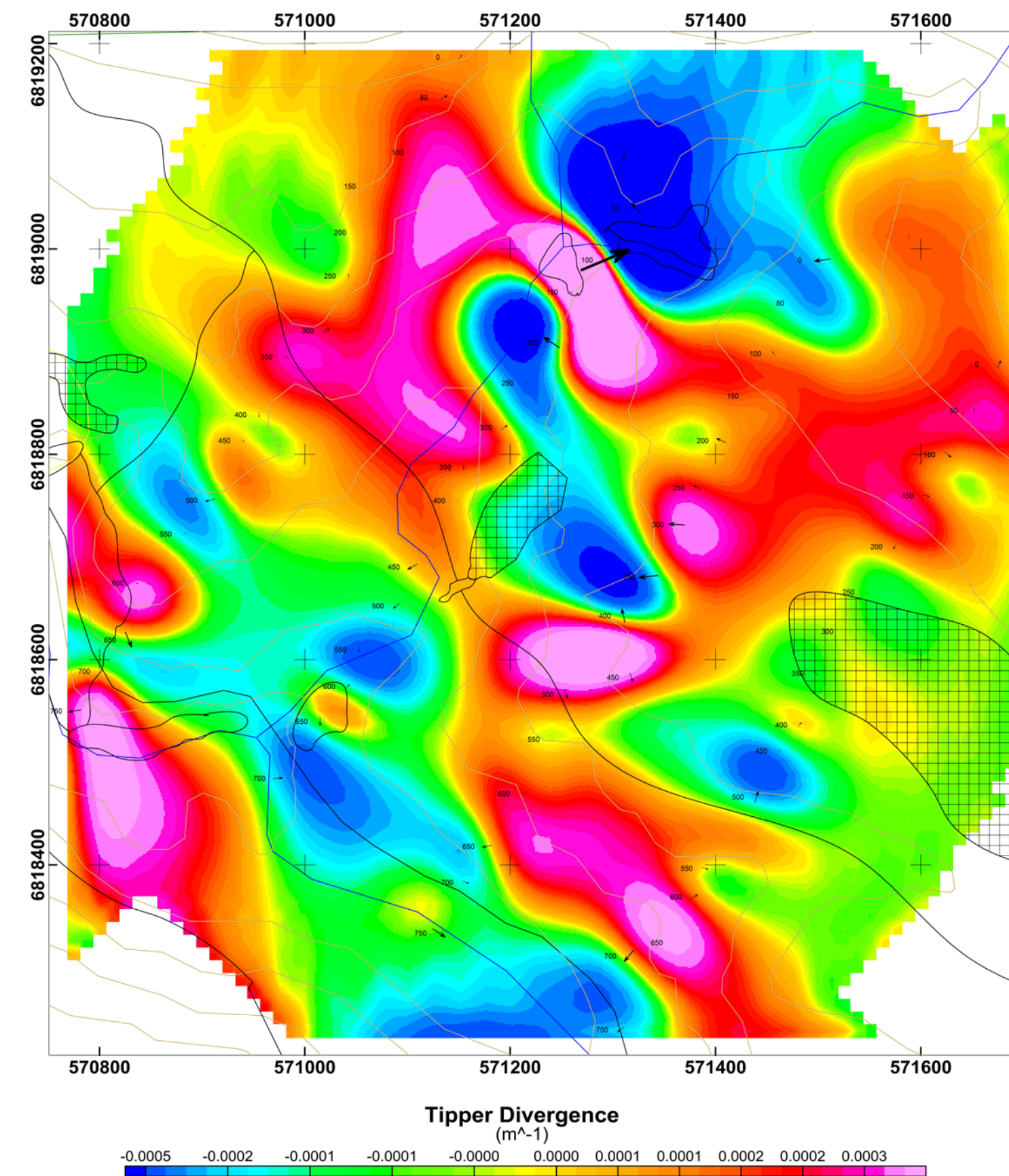
45 Hz



22 Hz



11 Hz



## LEGEND

EXTREMELY LOW FREQUENCY SURVEY

STATION 200 TIPPER VECTOR

DATA FILE : WELLGREEN\_ELF\_PJ\_QC.gdb

OPERATORS : PJ & CP

TOTAL STATIONS SURVEYED : 63

Scale 1:5000  
0 50 100 150  
metres  
NAD83 / UTM zone 7N

ultramafic sill

Revised Jan 19, 2014 by D. James.  
Replaced old geology with new geology.

<b>MIDNIGHT MINING SERVICES</b>
<b>DONJEK-ARCH PROJECT - TECK GRID</b>
<b>ELF COMPILATION</b>
<b>QUADRATURE TIPPER VECTORS &amp; DIVERGENCE PLOTS</b>
WHITEHORSE MINING DISTRICT, YUKON, CANADA NTS: 115 G 05
DATE SURVEYED: AUGUST 2013 DATE / DRAWN BY: AUG 28, 2013 / PJ
<b>AURORA GEOSCIENCES LTD</b>